

CLIPPER 2017-18 RACE FINISH - LIVERPOOL SPECTATOR CRAFT GUIDANCE

CLIPPER FLEET RACE FINISH AND ARRIVAL INFORMATION INTO ALBERT DOCK, LIVERPOOL – SATURDAY 28 JULY 2018

SUMMARY

The Clipper Race fleet will arrive into the River Mersey on Saturday, 28 July 2018 and the Race Finish will be on a finish line just outside Canning / Albert Dock. The fleet will then proceed to berth in Albert Dock.

All times are BST

All communications for the Clipper Race fleet will be on VHF CH 77
The backup channel for the Clipper Race fleet will be VHF CH 72

High Water (HW) Liverpool (Gladstone Dock) 28 July 2018 - 1231 8.6m
Low Water (LW) Liverpool (Gladstone Dock) 28 July 2018 - 1907 1.9m

NARRATIVE PLAN

The Clipper Race fleet will have a final sprint finish into Liverpool and will finish on a finish line just outside Canning / Albert Dock. It is estimated that they will be finishing across the line between 1000 – 1015. Once all Clipper Race yachts have finished they will strike all sails and rendezvous in an area to the north of the cruise terminal and Prince's Dock to prepare for the Parade of Sail.

PARADE OF SAIL

At 1115 the Clipper Race fleet will begin the Parade of Sail which will be a line astern formation in the vicinity of Albert Dock (in an area between the Cruise Terminal to the north and Brunswick Dock to the south on the eastern side of the River Mersey).

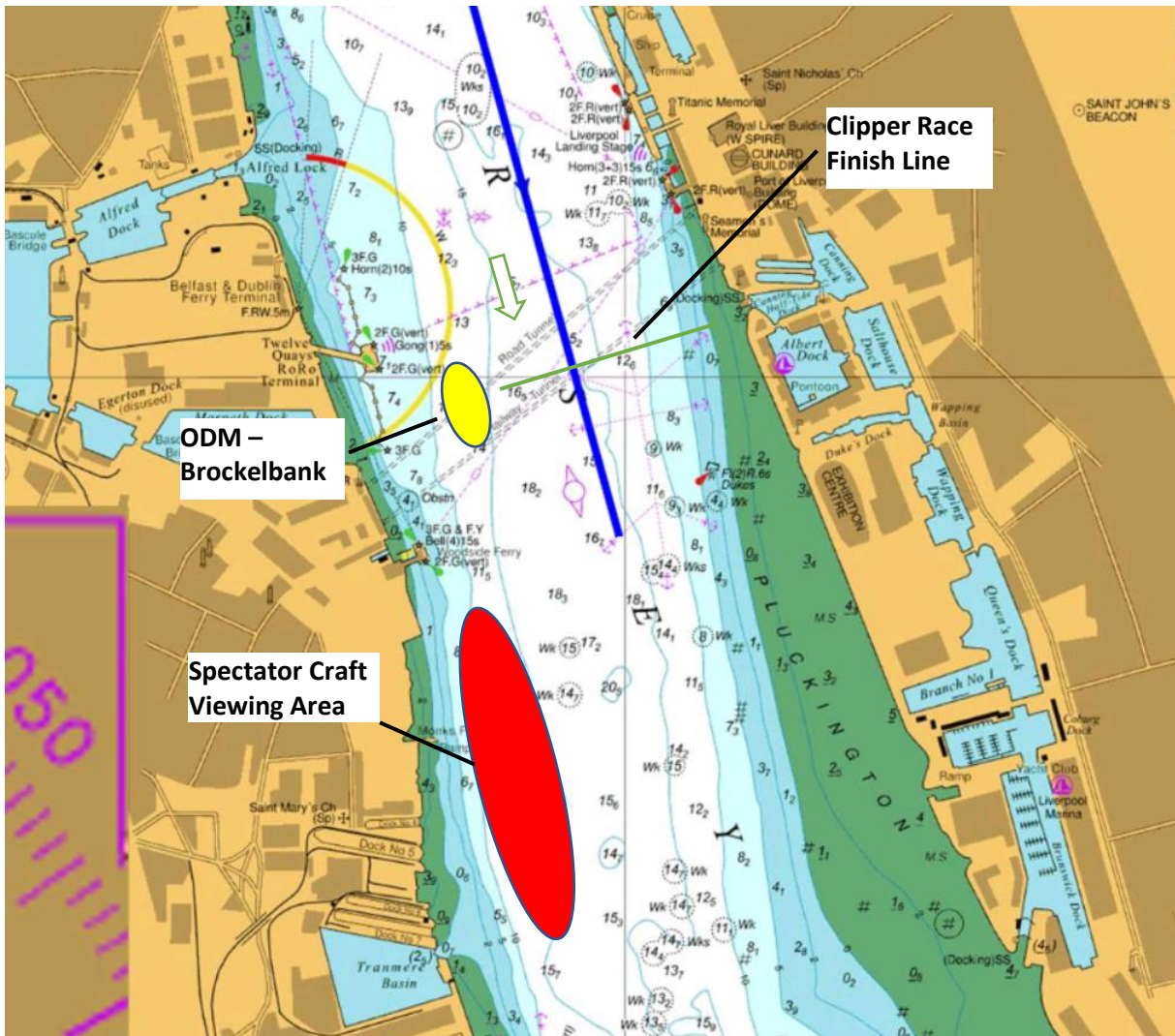
Each yacht shall have an average speed over the ground (SOG) of approx. 6 knots and a spacing of between 1 to 2 boat lengths from bow to stern. The total distance for the Parade of Sail will be approx. 2.8 nautical miles long and it is estimated that it will take a maximum of 30 minutes to complete. The exact route for the Parade of Sail is to be confirmed and will be weather permitting but it is expected to take place on the eastern side of the River Mersey (and similar to the Race Start).

FLEET ARRIVAL INTO ALBERT DOCK

The 1st of the 11 Clipper Race yachts will enter Canning Half Tide Dock at 1200 and pass through to tie up at the eastern end of Canning Dock. As it will be approaching HW each yacht will make their way in at intervals of 3 minutes. The 11th and final yacht will enter at 1230 and tie up alongside the fleet. Once the Canning Dock gate is closed, the Albert Dock gate will be opened. The 11th yacht will then slip lines and proceed into Albert Dock entering at 1255 and berthing as directed. Each yacht will proceed at intervals of 5 minutes and the 1st placed and final yacht will enter Albert Dock at 1345 and proceed to their berth.

CLIPPER RACE FINISH

Clipper 2017-18 Race Finish: Liverpool, Saturday 28 July 2018



NOT TO BE USED FOR NAVIGATION

RACE COURSE AND FINISH LINE (FROM LE MANS START IN LIVERPOOL BAY)

- All Red Port Lateral Channel Marks to Port
- All Green Starboard Lateral Channel Marks to Starboard
- Formby Fairway Buoy to Starboard
- Crosby Fairway Buoy to Starboard
- Tower Buoy East Cardinal Mark to Starboard
- Finish line in transit and off Canning Dock entrance
- Outer Distance Mark (ODM) (Tug Brocklebank anchored & holding station)

Race Finish Sprint Distance (Le Mans start to Finish Line) = 20nm

All timings BST

0700	Le Mans Final Sprint start in Liverpool Bay
1000 (est)	Clipper Race finish
1115	Parade of Sail starts
1145	Parade of Sail finishes
1200	1 st yacht enters Canning Dock
1230	11 th yacht enters Canning Dock
1255	11 th yacht enters Albert Dock
1345	1 st yacht enters Albert Dock
1415	Clipper Race Prizegiving

Abandonment Plan:

If for any reason (eg, adverse weather or shoreside security issue) the race or arrival ceremony needs to be abandoned then the Clipper Race fleet shall hold station at the RV point north of the cruise terminal and Prince's Dock and await further instructions.

If an individual yacht has cause to abandon due to engine failure, collision, grounding, fire or crew injury then the rest of the fleet shall proceed as planned. The decision to abandon the event shall be made and communicated by the Clipper Race Director in consultation with Peel Ports.

Overview

Event	Clipper 2017-18 Race Finish and Arrival
Organising Authority	Clipper Ventures
Race Officer	Mark Light
Operating area	River Mersey
VHF channels	77 (back up channel 72)
Callsign	'Clipper Race Control'
Supporting documents	Sailing Instructions, Course Instructions.
Date of event	Saturday 28 July 2018
Operating period	0700 to 1500 approx.
Website	www.clipperroundtheworld.com
Number of boats	11
Authorities informed by email	Peel Ports, Mersey VTS, Marine Police, Holyhead CG, RNLI, Liverpool City Council

SPECTATOR CRAFT GUIDELINES

- All Clipper Race communications to the fleet will take place on VHF CH 77 – Please keep this channel clear between 0600 and 1400 on Race Finish day.
- The backup channel for the Clipper Race fleet is VHF CH 72 – Please keep this channel clear between 0600 and 1400 on Race Finish day.
- Any communications from Clipper Race Control to spectator craft will take place on VHF CH 77 – Please monitor this channel at all times.
- There will be a Moving Prohibited Zone of 250m around all Clipper Race yachts.
- All spectator craft must keep at least 250m clear of the Clipper Race fleet at all times.
- All spectator craft must stay within the Spectator Craft Viewing Area during the Racing until the Clipper Race fleet have finished across the International Line.
- All spectator craft must be clear of the race area by 0800 and must not be moving outside the Spectator Craft Viewing Area between 0900 and 1030.
- Any spectator craft wishing to follow the Clipper Race fleet must stay behind the last Clipper Race yacht and must not pass ahead of any Clipper Race yacht.
- All commercial shipping movements will be broadcast on VTS on VHF CH 12.
- Please note that the arrangements may change on the day and this will be communicated to all spectator craft on VHF CH 77.